



MONTHLY MEMBERSHIP PROGRESS REPORT

District 5M 10

Results as of: 4/30/2014

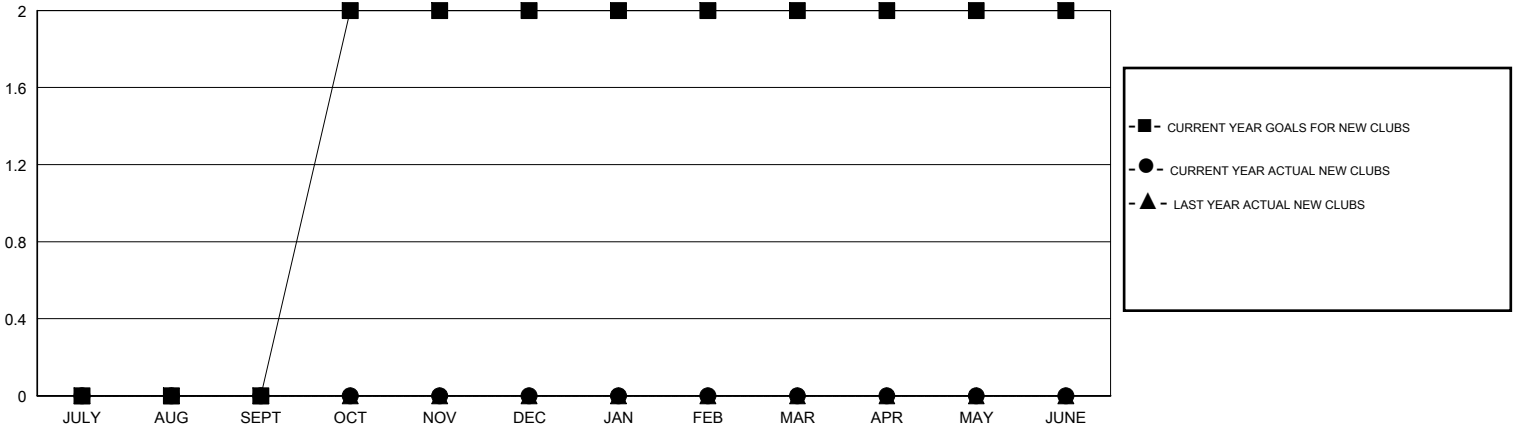
GMT: Andre Nimchuk

LOCATION MINNESOTA

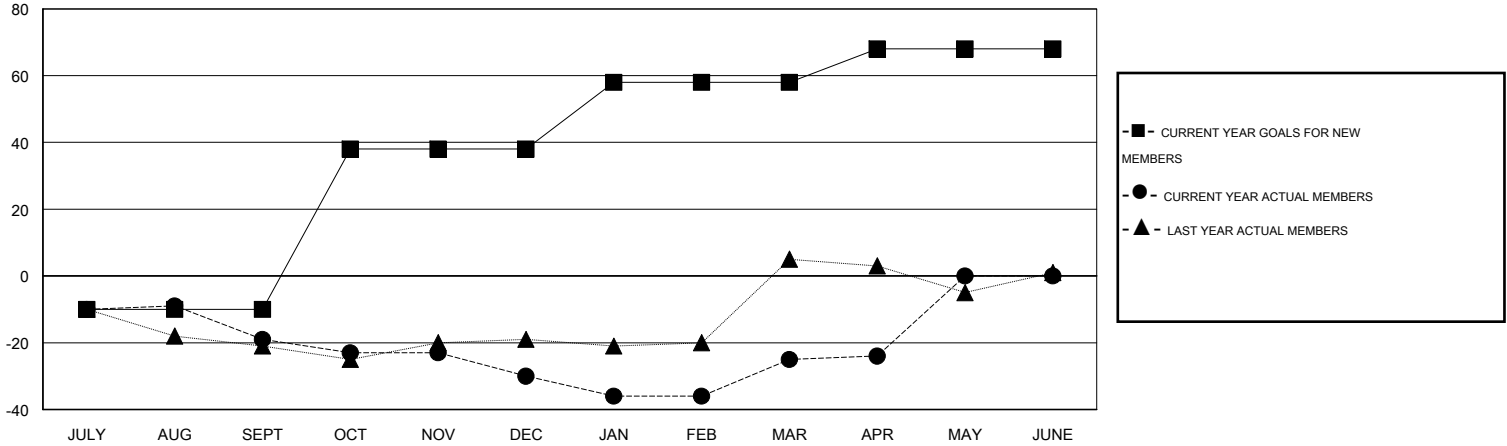
GMT CA 2

Clubs					Members				
RESULTS FOR 2013-2014					RESULTS FOR 2013-2014				
QUARTER	NEW CLUB GOAL	ACTUAL NEW CLUBS	ACTUAL DROPPED CLUBS	ACTUAL NET GAIN/LOSS	QUARTER	NEW MEMBER GOAL	ACTUAL TOTAL MEMBERS ADDED	ACTUAL DROPPED MEMBERS	ACTUAL NET GAIN/LOSS
JULY/AUG/SEPT	0	0	0	0	JULY/AUG/SEPT	-10	11	30	-19
OCT/NOV/DEC	2	0	1	-1	OCT/NOV/DEC	48	10	21	-11
JAN/FEB/MAR	0	0	0	0	JAN/FEB/MAR	20	33	28	5
APR/MAY/JUNE	0	0	0	0	APR/MAY/JUNE	10	37	36	1

GOALS AND ACTUAL NEW CLUBS CUMULATIVE



GOALS AND ACTUAL MEMBERS CUMULATIVE



DROPPED CLUBS: 1	26 CLUBS OF 48 ADDED 1 OR MORE NEW MEMBERS	<u>GENDER DISTRIBUTION</u>	
<u>DROPPED MEMBERS</u>		MALE	765 (64.56%)
DECEASED	13	FEMALE	420 (35.44%)
CLUB CANCELLED	0	<u>FAMILY UNIT MEMBERS</u> 224	
OTHER	102	<u>HEAD OF HOUSEHOLD</u> 110	
TOTAL	115	<u>NON-HEAD OF HOUSEHOLD</u> 114	

[CLICK HERE FOR HEALTH ASSESSMENT DATA](#)